

# ActiveLights™

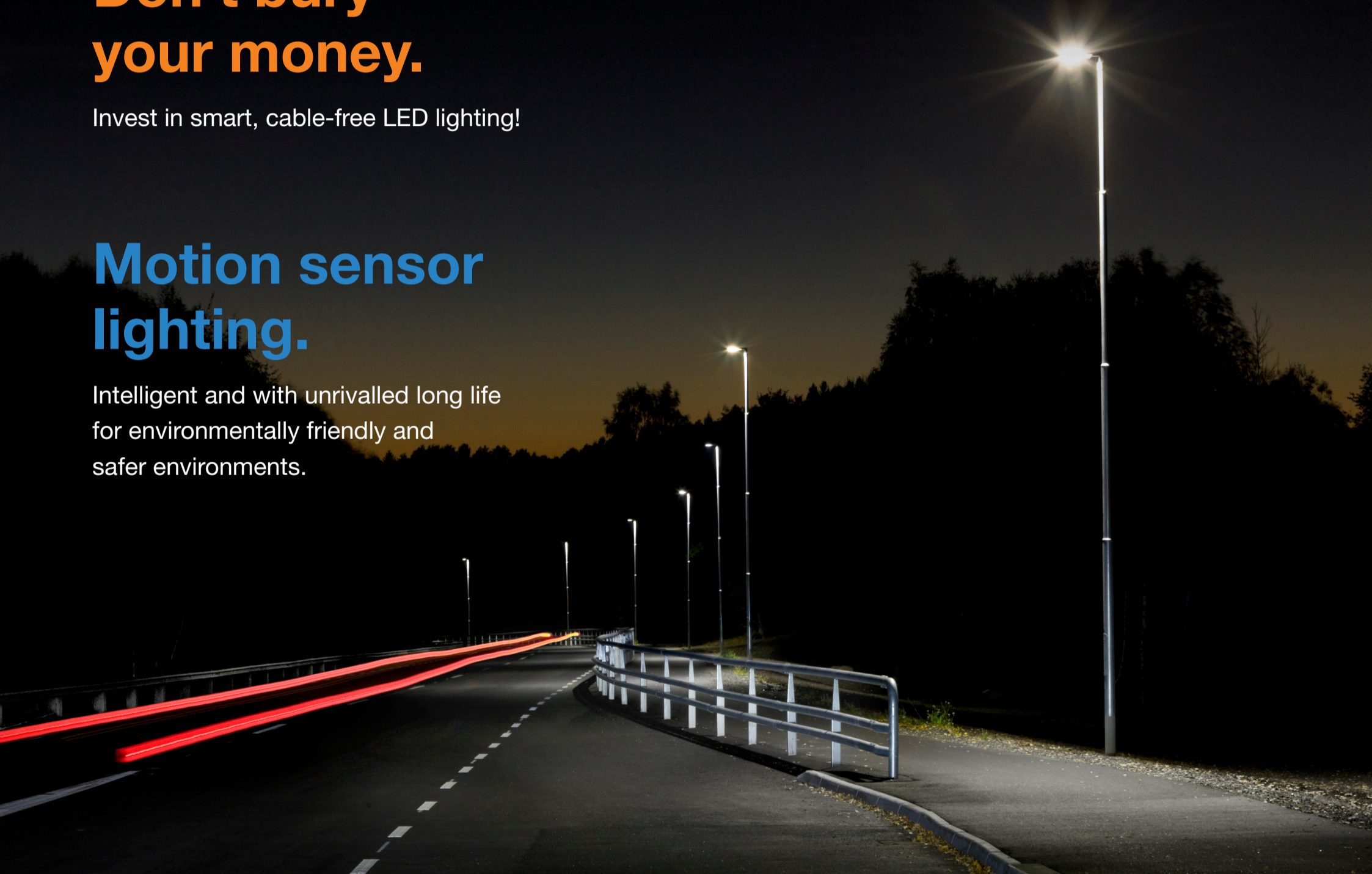
Smart lighting for sustainable cities

**Don't bury  
your money.**

Invest in smart, cable-free LED lighting!

**Motion sensor  
lighting.**

Intelligent and with unrivalled long life  
for environmentally friendly and  
safer environments.



Designed and manufactured in Sweden  
for Nordic climates

5 year guarantee

Pro

iQ

Solar

# Made in Sweden world-class LED-luminaires



Lerum, walkway and bike path

*Leading Light have excellent solutions for all our public lighting challenges. ActiveLights Solar for example is ideal when we can't bury cables or where drawing cables would be very costly. That can be anything from bus stops and recycling stations to walkways and bike paths.*

*The luminaires are extremely good. For instance the light sensor is positioned facing downwards thus avoiding the dirt that can fasten on an upward facing sensor. The lighting shuts down for a few micro seconds at regular intervals to allow the sensor to assess light levels and adjust to the desired strength. We will shortly be installing 150 ActiveLights IQ along a pedestrian and bike path in Särö. In fact we use the entire Leading Light range of products. They save energy and money, lower environmental impact and work really well.*

*Göran Bengtsson, Civil engineer, Kungsbacka municipality, Sweden*



Gothenburg, Sweden, Stena Real Estate, sports ground



City of Gothenburg Pro parking, pay and display



Gothenburg, Sweden, Bostads AB Poseidon, facade



Kungliga Djurgårdens Förvaltning, Stockholm, suspended lighting



Swedish Maritime Administration, Trollhätten canal

# Smartest on the market

ActiveLights Pro has been developed for effective and sustainable lighting for streets and buildings. The luminaire has a modern, simple design using world-class technology and gives a long lifetime with minimum maintenance. ActiveLights Pro was designed to meet our customers' demands for functionality, lighting and installation. The luminaire has high basic functionality with effect regulation, night dimming and lighting control. This means lower running costs and lower environmental impact. All ActiveLights products are manufactured in Sweden. We provide fast delivery and the highest level of service.



Luminaires with 25-90 W effect, up to 12 m height.



Pro 5-25



Pro 5-40



Pro 10-90



Pro Sea



Pro 5-25 Parking



Pro 10-75 Wire

## Practical mounts



Roof bracket RMB



Wall bracket WMP



Adjustable pole bracket FLX



Wall bracket WMT STR/FLX



Fixed pole bracket STR



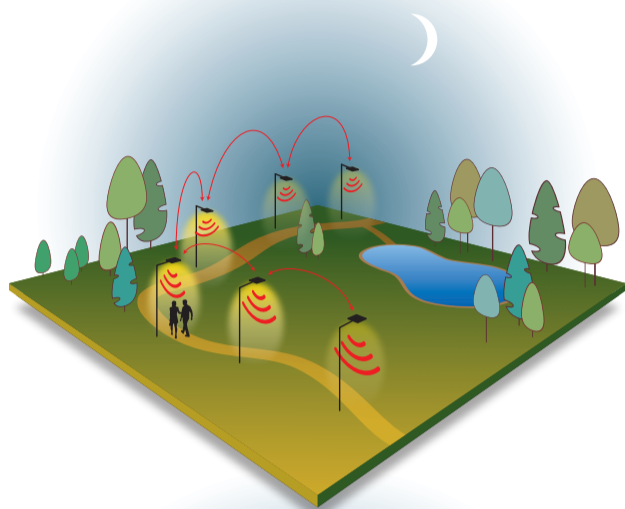
Corner bracket ZWMP

<b>ActiveLights Pro 5-25</b>	8 st LUXEON TX High Power LED, 2720 lumen, 2.8 kg, 280x240x35mm
<b>ActiveLights Pro 5-40</b>	16 st LUXEON TX High Power LED, 4580 lumen, 2.8 kg, 280x240x35mm
<b>ActiveLights Pro 10-75</b>	32 st LUXEON TX High Power LED, 8700 lumen, 3.7 kg, 340x240x35mm
<b>ActiveLights Pro 10-90</b>	32 st LUXEON TX High Power LED, 9966 lumen, 3.7 kg, 340x240x35mm
<b>Light properties:</b>	4 000 Kelvin Ra 75 (3000 K Ra 80) Mac Adam 3, L90 F10 minimum 100 000 h
<b>Supply voltage:</b>	Control drive 230 VAC, luminaire 24 VDC, Class II (control drive)
<b>Housing:</b>	Pre-cast aluminium, RAL 9006 grey alt. RAL 9005 black, other colours option
<b>Glass:</b>	Prismatic toughened glass, option Polycarbonate IK10+ vandal proof glass
<b>Ingress protection:</b>	IP 66
<b>Assembly:</b>	Selectable bracket for post, facade, roof or wire
<b>Miscellaneous:</b>	Luminaires supplied with connected cable and bracket
<b>Country of manufacture:</b>	Developed and manufactured in Sweden
<b>Guarantee:</b>	5 years

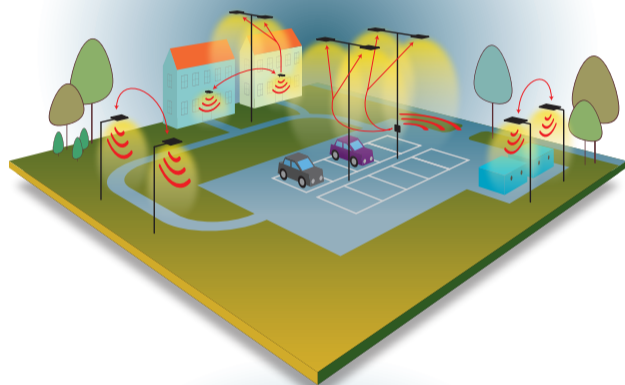
# Smart lighting for sustainable cities

The IQ system allows control and optimization of the luminaires, leading to up to 80% energy savings without compromising safe lighting. The earth's exhaustible resources are saved and light pollution decreased. Investing in an IQ system pays for itself in 4-8 years compared with systems without control functions.

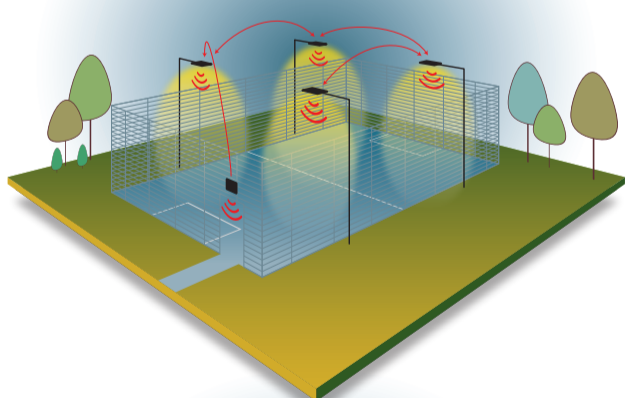
## Save up to 80% energy with ActiveLights IQ



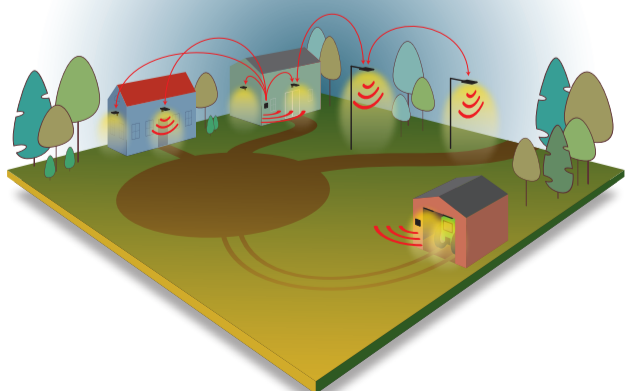
Walkway and bike path



Parking



Football pitch

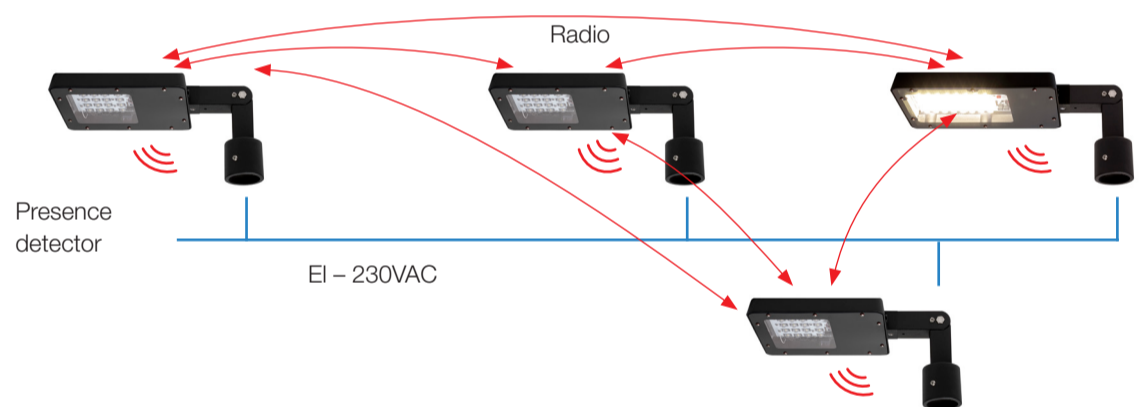


Buildings

## How IQ and presence detection work

With IQ, constructing presence detection lighting systems without costly cables has never been easier. The IQ luminaires send signals through a wireless radio network and only need to be connected to a power supply. Basic lighting and detection lighting are managed separately in each luminaire. With this smart lighting system you choose which luminaire will light up in different scenarios so to achieve maximal safety and optimal lighting every time. For example if you want to detect movement at an entrance, a smart sensor box can be mounted. The IQ box will light up the selected luminaires in the system and at the same time measure speeds of up to 100 km/h.

### Connect to power – wireless communication and control



This system can be configured for constant power supply and use the built-in light sensor to light up at dusk. A system comprises at least one unit with GPS (M), supplying the system with correct position and time. The real time clock controls the programmed timing over 24 hours. To measure the number of passages during the day the power supply must be on 24 hours. Energy, number of passages and running data are saved for at least three months.

*It is very easy to do business with Leading Light. They have usually discussed the lighting for each location with the client beforehand so the luminaires are already pre-programmed when we install them. If I want to make small adjustments I just use the remote control, which is especially convenient when the LED-luminaires are placed at height or in locations that are difficult to reach. To the best of my knowledge there is no system on the market that rivals ActiveLights IQ's refined communication. That is one of the reasons we are now installing them in more and more locations throughout Gothenburg.*

*Magnus Ryd, Project Manager Electricity, Göfast Gruppen AB*

# ActiveLights IQ is the smartest LED luminaire on the market

Luminous flux can now be regulated and optimised according to need, thanks to our intelligent sensors and wireless control. You will have safe and reliable outdoor lighting while saving energy with the right luminance at the right time.



- Two logical schedules for smart lighting control
- Operating statistics
- Passage statistics (number)
- Temperature statistics min/max (C°)
- Speed measurements IQ Box (km/h)
- Individually programmable lighting level 0 – 100%
- 3G online monitoring and programming

## Luminaires with 25-90 W effect



IQ 5-25, IQ 5-40



IQ 10-90



Active Lights IQ Box with smart sensors

<b>ActiveLights IQ 5-25</b>	8 items LUXEON TX High Power LED, 2653 lumen, 2.8 kg, 280x240x35mm
<b>ActiveLights IQ 5-40</b>	16 items LUXEON TX High Power LED, 4510 lumen, 2.8 kg, 280x240x35mm
<b>ActiveLights IQ 10-90</b>	32 items LUXEON TX High Power LED, 9600 lumen, 3.7 kg, 340x240x35mm
<b>Light properties:</b>	4000 Kelvin Ra 75 (3000 K Ra 80) Mac Adam 3, L90 F10 minimum 100,000 h
<b>Supply voltage:</b>	Control drive 230 VAC, Luminaire 24 VDC, Class II (external control element)
<b>Housing:</b>	Pre-cast aluminium, RAL 9005 black, RAL 9006 grey, other colours option
<b>Glass:</b>	Polycarbonate IK10+, vandal proof glass
<b>Ingress protection:</b>	IP 66
<b>Assembly:</b>	Selectable bracket for post, facade, roof or wire
<b>Miscellaneous:</b>	Luminaires supplied with connected cable and bracket
<b>Country of manufacture:</b>	Developed and manufactured in Sweden
<b>Guarantee:</b>	5 years



Borås



Stockholm



Gothenburg



Djurgården park, Stockholm



Lysekil



Jönköping



We began looking for ways to light up walkways and bike paths four years ago. The problem was that there were no cables laid along these paths and we would save a lot of money if we didn't have to dig. ActiveLights Solar was the perfect answer, environmentally friendly and totally solar powered. Over the last three years we have installed light poles along two kilometers of foot- and bikepaths in our municipality. The system lights up the next pole when anyone walks or cycles past in the dark and it works very well. We have heard from lots of people who have told us how much safer they feel when out walking today. This feels very positive..

*Patrik Tellander, Director Streets and Parks, Street lighting in Mellerud*

# Unique solar powered lighting

With ActiveLights Solar 100% solar powered lighting you can reach your environmental energy saving targets by 2020. And there are minimal maintenance costs and no electricity bills.

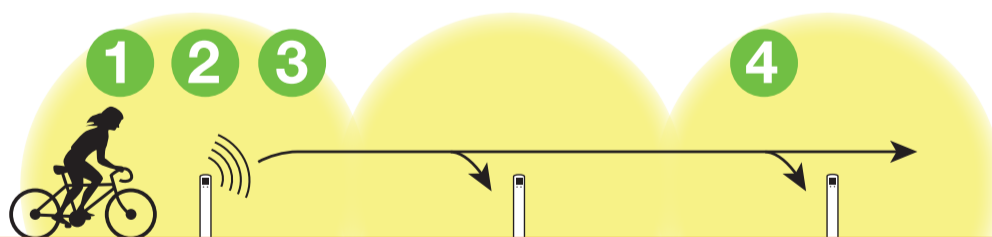
ActiveLights Solar is a range of solar cell powered lighting systems for walkways and bike paths, parks, bus stops, bridges and similar locations. These unique systems are motion activated on demand and create lighting and security for passers-by. ActiveLights Solar products are cost effective and totally solar powered.

Today you will find ActiveLights Solar installed in more than 150 locations in Sweden, Norway and Denmark.

## How it works

- 1 The motion sensor detects approach and the pole lights up.
- 2 As the pole is passed the motion sensor detects direction.
- 3 The pole signals wirelessly to the next three poles to light up.
- 4 The result is clear lighting that follows the biker or walker.

Once the pole is passed the light turns off.



### ActiveLights Solar 1.0



On demand lighting that gives 100% light with motion sensor, cc 15-18 meters.

### ActiveLights Solar 2.0



On demand lighting that gives 100% light with motion sensor. Constant basic lighting four hours nightly.

### ActiveLights Solar 4.0



On demand lighting that gives 100% light with motion sensor. Luminaire height 4 meters. cc 20 meters.

### ActiveLights Solar 6.0



On demand lighting that gives 100% light with motion sensor. Luminaire height 5.5 meters. cc 25 meters.

ActiveLights Solar	1.0	2.0	4.0	6.0
<b>Light properties:</b>	6 000 Kelvin, 4 Cree LED-diodes	6 000 Kelvin, 4 Cree LED-diodes	Luxeon TX High Power 8-32 diodes	Luxeon TX High Power 8-32 diodes
<b>Lux/Lumen:</b>	approx 3 Lux ground level	approx 3-5 Lux	400-1900 Lumen	400-1900 Lumen
<b>Supply voltage:</b>	2.4 VDC battery, Ni MH, 10 Ah, 7-10 years operational lifetime	2.4 VDC battery, Ni MH, 10 Ah, 7-10 years operational lifetime	10.8 VDC battery, Ni MH, 10/20 Ah, years operational lifetime	10.8 VDC battery, Ni MH, 10/20 Ah, years operational lifetime
<b>Housing:</b>	Acid-proof stainless steel, other colours as option		Galvanized pole	Galvanized pole
<b>Ingress protection:</b>	IP 54 electronic	IP 54 electronic	IP 66	IP 66
<b>Assembly:</b>	Earth anchor or rock	Earth anchor or rock	Base 108/900 or 108/1300	Base 108/900 or 108/1300
<b>Weight, height x breadth:</b>	7 kg, 965x102 mm	9 kg, 1055x102 mm	60 kg 6100 x 108 mm	60 kg 6100 x 108 mm
<b>Country of manufacture:</b>	Developed and manufactured in Sweden		Developed and manufactured in Sweden	Developed and manufactured in Sweden
<b>Guarantee:</b>	5 years with service agreement		5 years with service agreement	5 years with service agreement



Leading Light AB with the trademark ActiveLights™ is the market leader in intelligent lighting systems for towns and cities, public authorities and property owners. The systems are innovative and adjustable, will lower energy costs and have considerable advantages in comparison with traditional lighting. With sensitive detectors, wireless control, built-in intelligence and high-efficiency LED lenses we supply the market with lighting for the smart, sustainable city. The systems are moreover designed for electric and environmentally friendly power using only solar cells.

The lighting of the future is already here.



# ActiveLights™

**Leading Light AB** • Flöjelbergsgatan 12 • SE-431 37 Mölndal, Sweden • Tel: +46 31-757 45 50

[www.leadinglight.se](http://www.leadinglight.se) • [info@leadinglight.se](mailto:info@leadinglight.se)